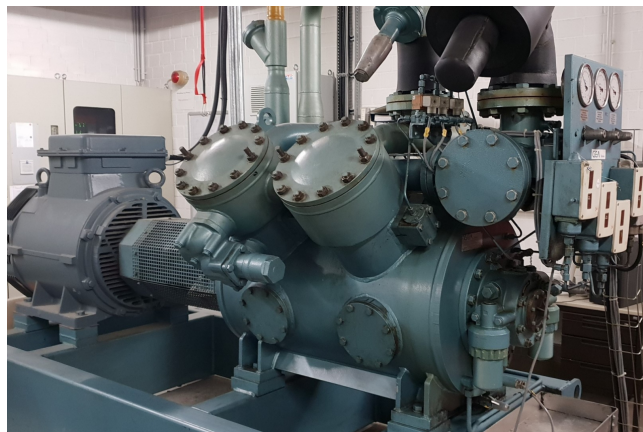


Grasso RC 412E

Specifications

| | |
|------------------------------|-------------------|
| Merk | Grasso |
| Type | RC 412E |
| Koudemiddel | NH 3 (ammonia) |
| kW at -10°C/+40°C | 325* |
| Elektromotor Specs | VEM 50Hz 90kW |
| Op stalen frame | ✓ |
| Druk veiligheids schakelaars | ✓ |
| Manometers | ✓ |
| Magneet Afsluiter | ✓ |
| Opmerkingen | Y.o.b. 2000 |
| Afmetingen | 2600x1350x1800 mm |
| Stock | 1 |



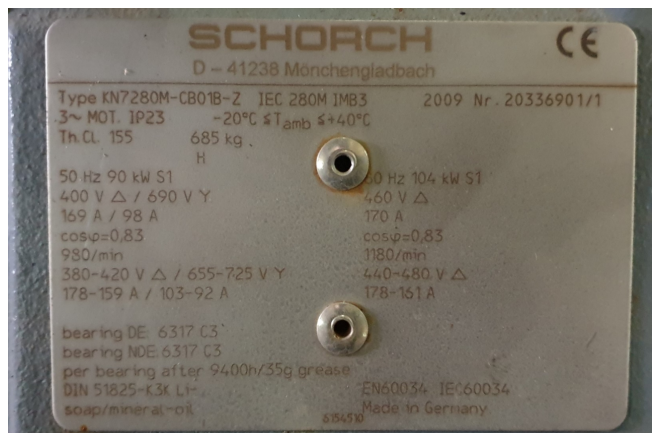
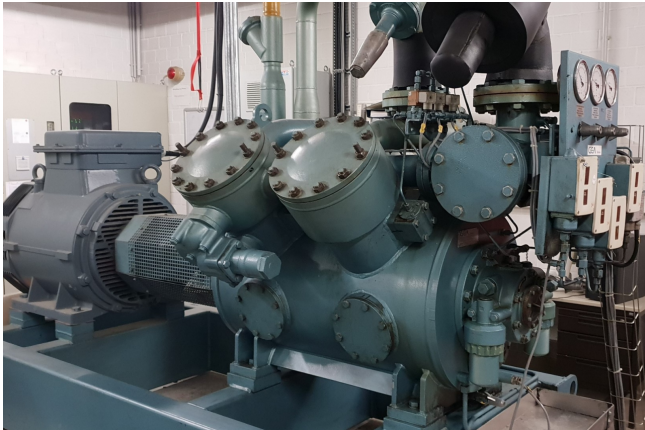
Description

Used Grasso RC 412E

Used GEA/Grasso RC 412E piston compressor unit ammonia. Complete with electromotor VEM type: KN7 280M 980RPM, oil separator. Capacity is based on -9°C/+32°C. Build in 2000.

*Why choose for HOSBV? We're not only the largest used refrigeration specialist in Europe, but also, we deliver all equipment including an extensive test, warranty and industrial cleaning.

*Optional we can also perform a new paint job and arrange the logistics.





| Verdichter | | | | Motor(en) | | | |
|-------------------|----------|----------|----------|-------------|--------------|----------------|------------|
| V1 | V2 | V3 | | VM1 | VM2 | VM3 | |
| Hersteller: | Gram | Gram | Grasso | Hersteller: | VEM | VEM | Schorch |
| Type: | GSV 64 | HC 6100 | 412 E | Type: | KP ER 315 M2 | KP ER 315 M6.4 | KN7 280M |
| Kältemittel: | R 717 | R 717 | R 717 | Leistung: | 132 kW | 65/80 kW | 90 kW |
| Kälteleistung: Qo | 430 kW | 255 kW | 325 kW | Drehzahl: | 3000 1/min | 1000/500 1/min | 1000 1/min |
| Baujahr: | 2003 | 1998 | | Spannung: | 400V /50Hz | 400V /50Hz | 400V /50Hz |
| to: | -9 °C | -9 °C | -9 °C | Nennstrom: | A | A | 169 A |
| tc: | +32 °C | +32 °C | +32 °C | Schutzart: | IP | IP | 23 IP |
| Betr.-Gew.: | kg | kg | kg | Betr.-Gew.: | kg | kg | kg |
| 1 | | | | 2 | | | 3 |